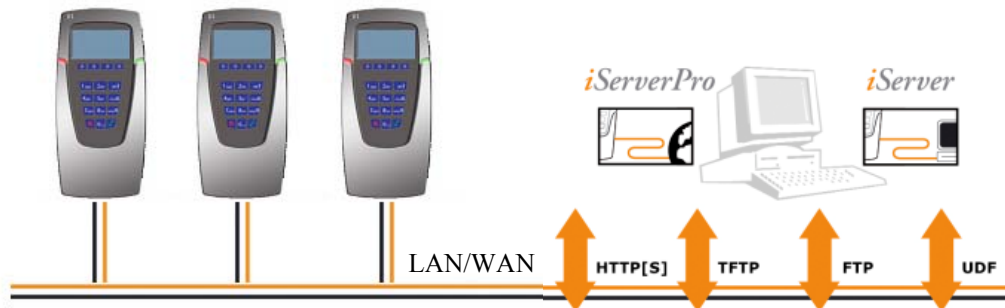


iServer Concept



1. Terminal Communication:

iServer™ and **iServerPro™** are the generic communication & management platforms for the **iTerminal™** series. **iServer™** is an application and is typically used for LAN-based solutions for SMB. **iServerPro™** is a web service and the preferred choice for scalable, WAN and Internet based installations. The robust data communication protocol between the servers and the terminals ensures that no data gets lost during the transmission. Security layers are implemented by password management and SSL.

2. Terminal Management:

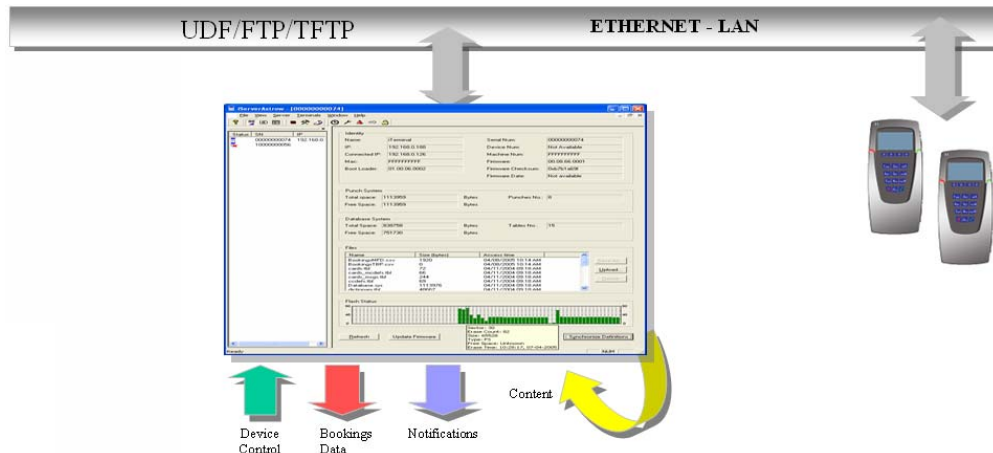
Apart from being communication platforms, **iServer™** and **iServerPro™** also offer terminal management functionality. The terminal management modules of **iServer™** and **iServerPro™** are similar in concept and offer the following functionality

- Terminal definitions
- Terminal configuration and parameter settings
- Terminal monitoring and managed services
- Terminal functional control
- Terminal firmware control

3. Terminal Integration:

iServer™ and **iServerPro™** have an open structure that allows for integrations. It shields the integrator from the burden to implement all the protocols from scratch. Being able to rely on proven technology it will also enabled the integrator to create robust solutions very fast, as such reducing the time to market and the investment cost.

1. Database Layer I/F:

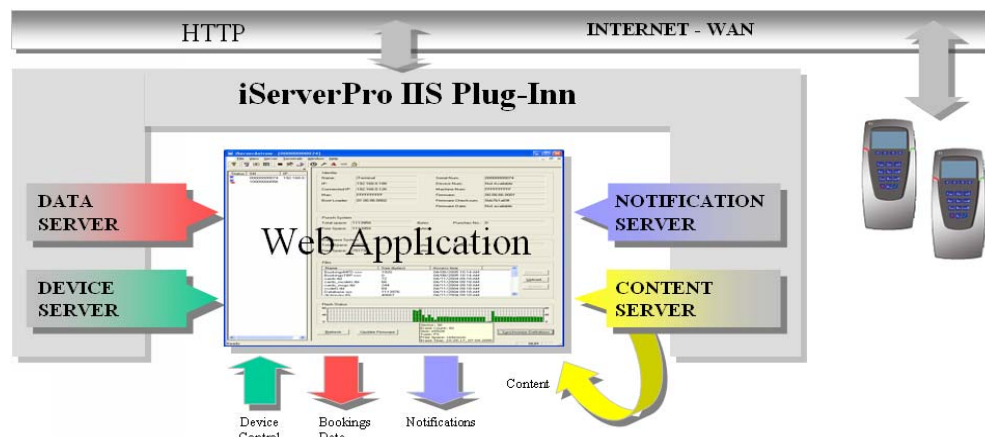


Both **iServer™** and **iServerPro™** offer an interface based on a database, consisting of 4 distinct layers;

- *Device Control Layer*: handling setup, diagnostics and firmware upgrades
- *Data Layer*; collecting data from all iTerminal and storing them in the iServer database
- *Notifications Layer*; informing the iTerminals of the availability of new data the should upload
- *Content Layer*: allowing the iTerminal to present real time information in a particular format to the users which resides actually on the iServer

All four can run on the same physical server or be distributed over several sites and as such offering increased flexibility (ex; bookings data to payroll provider, device control local IT department).

2. iServer Plug-in I/F:



iServerPro offers an interface layer for each of the above mentioned

database interface modules. So basically each functional as it is described in iServer is also a plug-in to iServerpro. This allows the system integrator to write his own functional block as a new plug-in. If for example a .Net interface is required for the Device Management, is it sufficient to extend the existing database based device management service plug-in in the iServerPro.

Since iServerPro is a plug-in to IIS it's GUI is 100% web based. This allows full remote control of iServerPro..

3. Customizations:

If you rather focus on your own application you can get the iServer with the interface you require. Upon provision of a proper documentation of the required protocol and clear functional analyses the iServer is the link between your application and the iTerminal providing an instant solution easy to maintain. New features in your application translate seamless to the terminals even with newer generation of terminals, the iServer bridges all potential technology changes and ensures compatibility.

You can also integrate the iTerminal protocols direct, as such writing your own iServer. Support for this is also provided.

Please refer to ASE's Partnership program for more details regarding 3rd party the integrations

4. Tools: Table editor and Font Editor:

Table editor; allowing easy customisation of the iTerminal its database
 Font editor; creates new fonts or logo's

